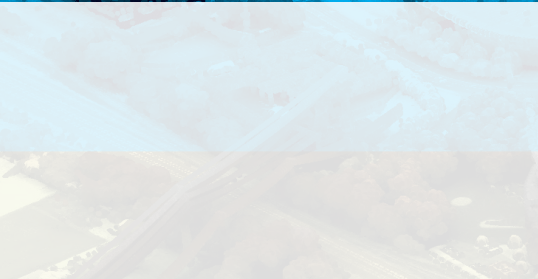
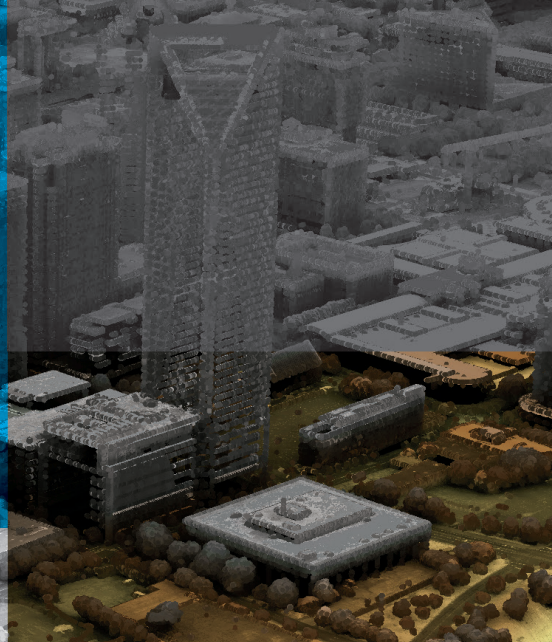
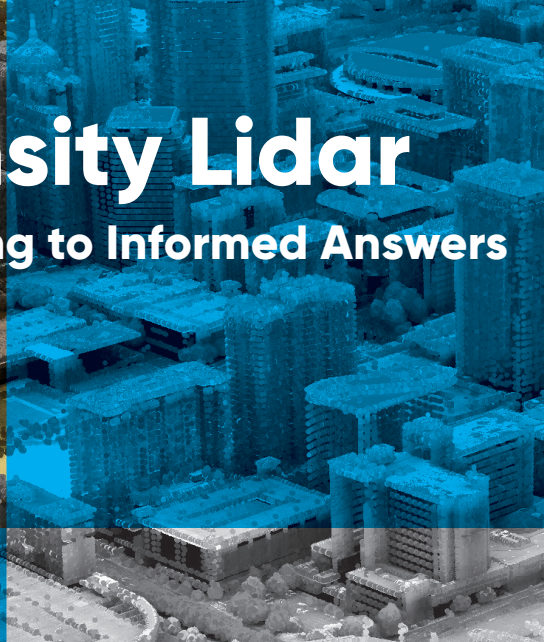


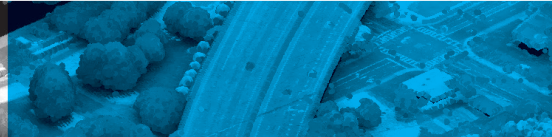
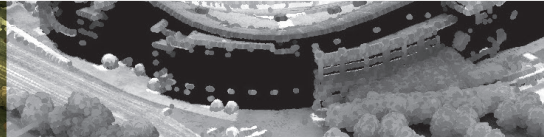
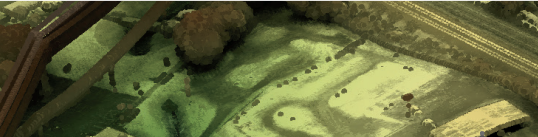


High Density Lidar

Innovation Leading to Informed Answers



N | V | 5



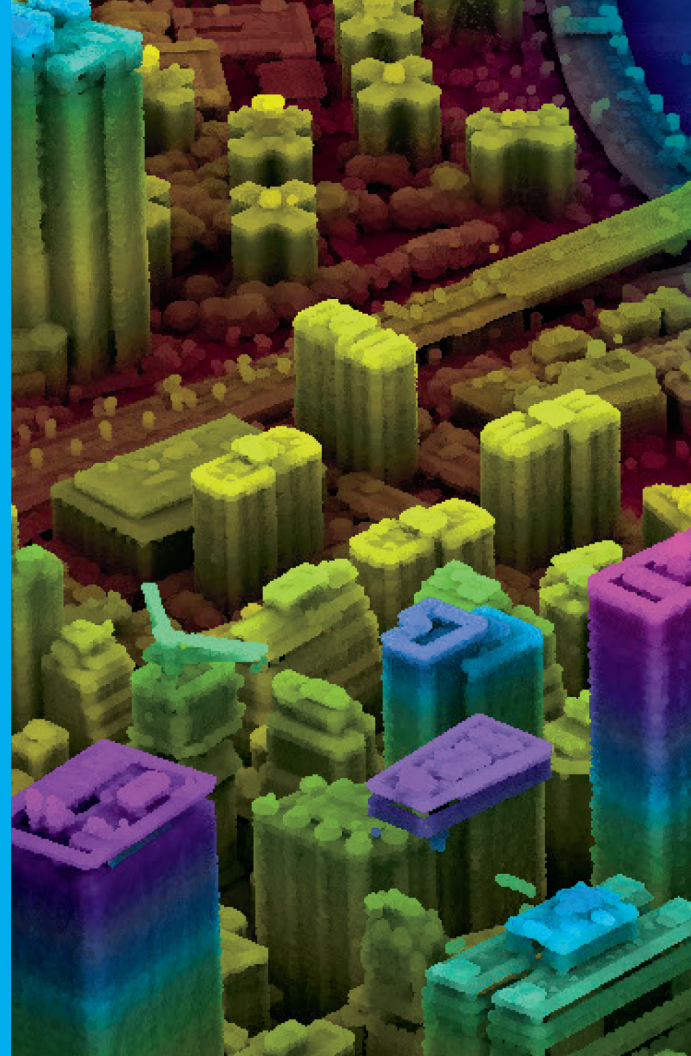
Why NV5?


NV5 pushes the boundaries of data and analytics to deliver actionable intelligence to those who need to map, model, and manage their world.

We lead the nation as the only end-to-end geospatial solutions provider with the capability to deliver the highest quality data and geographic insights.

We combine unmatched expertise and experience with the latest technology and proprietary software to map and analyze all types of terrain. But we are so much more than what we measure.

We lead our peers in innovation and are active participants in the research community, constantly exploring new and novel ways to solve our client's greatest challenges.

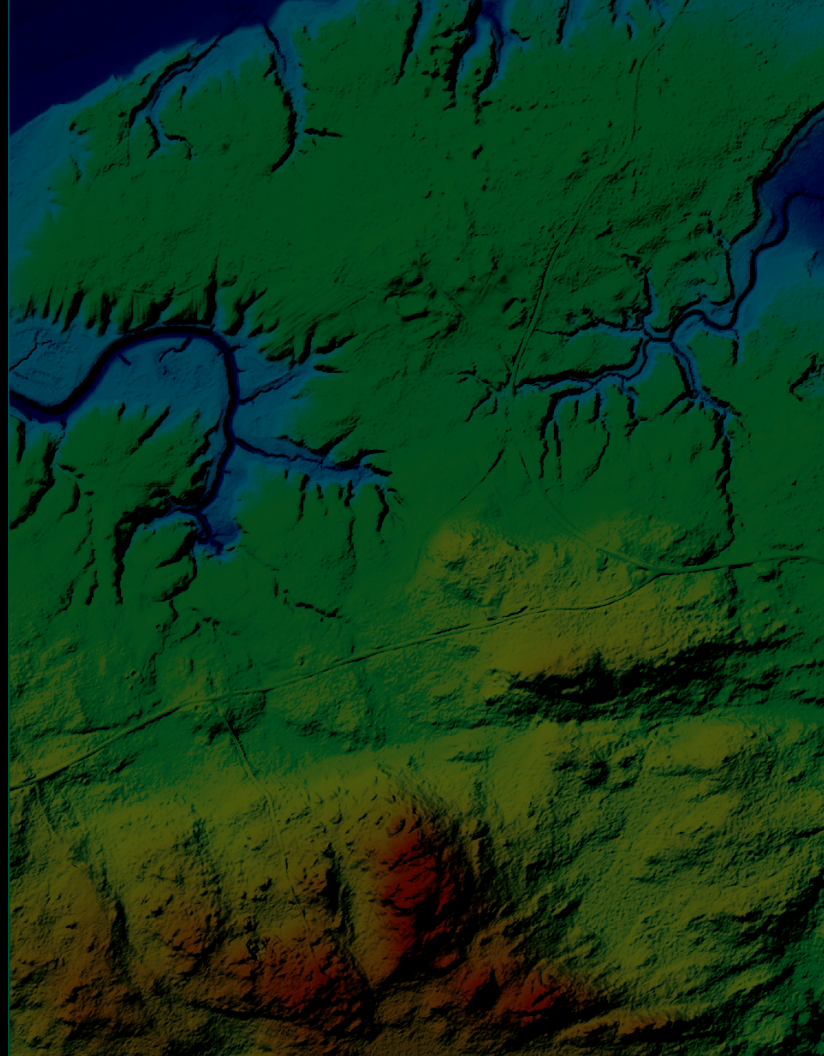


The background features a 3D cityscape constructed from various colored, translucent blocks in shades of purple, blue, green, yellow, and red. The blocks are arranged to resemble skyscrapers and buildings. A white, torn-paper-style map of North America is superimposed on the scene, with the text centered within its outline. The overall background is a dark, deep blue.

**NV5 is North America's
most comprehensive,
capable, and innovative geospatial
services firm.**

Lidar is Limitless

Many industries and disciplines are using lidar to solve a host of real-world challenges - keeping the lights on, mitigating risk and improving response to disaster, conservation, and land and water resource management. The list is endless.



The Lidar Revolution for High Density Data Has Arrived

We drive change in the acquisition and production of high-resolution, high-accuracy datasets. We then transform these dense unstructured data into structured datasets optimized for analytics. Our R&D investment in next-gen solutions keeps us at the forefront of the market.

Acquire

North America's largest and most modern suite of acquisition platforms

More acquisition experience than any of our peers

Analyze

Machine learning and AI built into all data production

Informed analytics allow extraction of critical information from your data

Answer

Key analytic insights such as feature extraction, change detection, and obstruction analysis

Answers to your most challenging questions

Acquire

Data is only as good as the people who gather it and the technology used to capture. And we, fortunately, have the best. We know the lay of the land because we fly all 50 states across North America. Wherever you need us we are already there. NV5 is fast deployment capable, using the best technology at the forefront of advancements. We take pride in our superior track record and our experience with difficult terrain and weather. We offer a variety of solutions, but first, we listen and then craft a plan around both the sensor and platform to cater to you.





HEAD PHONES REQUIRED FOR FLIGHT

Avoid Poisonous
Odorless CO gas
EXHAUST MANIFOLD DETECTOR

DAY OR NIGHT AS APPLICABLE

PARKING BRAKE
TO APPLY BRAKES
PULL UP BRAKE PEDALS AND PULL BRAKE
TO RELEASE BRAKES, PUSH BRAKE
PEDALS DOWN. HOLD UP TO 10 SECONDS
MAX. DO NOT HOLD UP TO 10 SECONDS
MAX. DO NOT HOLD UP TO 10 SECONDS

Acquisition Methodology

Airborne, UAS, Autonomous, Mobile, Ground

Depending on the task at hand, the best method of capture may involve Unmanned Aerial System (UAS), robots, or automobiles! NV5 excels at all and understands the nuances of each.

Most wide-area lidar acquisition is captured from fixed wing, but we also use rotary wing for corridor and specialty wide-area applications. Our fleet of aircraft are specifically configured to capture high-quality lidar data. Our fixed wing platforms acquire point densities up to 40 points per square meter; other platforms allow considerably higher densities.

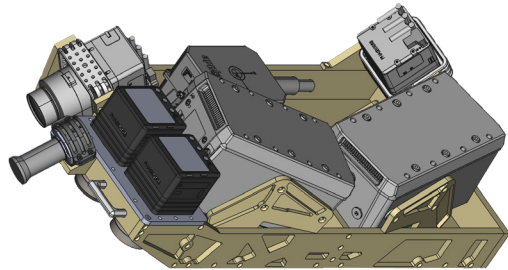




RIEGL VQ 1560i



RIEGL VUX-LR



CLASS 2.0

Sensor Selection

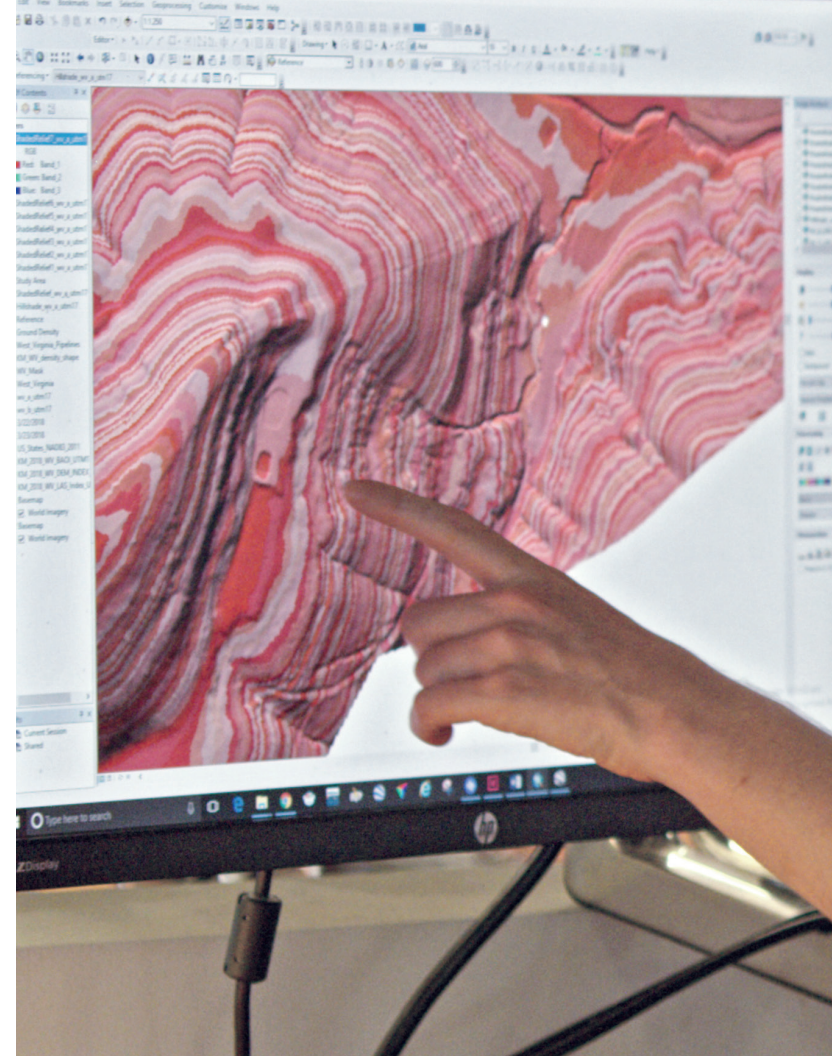
All sensors are not created equally. Moreover, sensor technology is in constant change. NV5 is on the leading edge of technology implementation with our suite of terrestrial and topobathymetric lidar (used for mapping landforms under water) sensors.

The RIEGL 1560i represents the top-of-the-line fixed wing and the RIEGL VUX-LR is in the same class for rotary-borne acquisition. Our suite of owned sensors includes multiples of both, as well our our Comprehensive Low Altitude Sensor Solution (CLASS), an innovative sensor approach to the simultaneous acquisition of high-density, high-resolution lidar, stereo imagery, and oblique imagery.

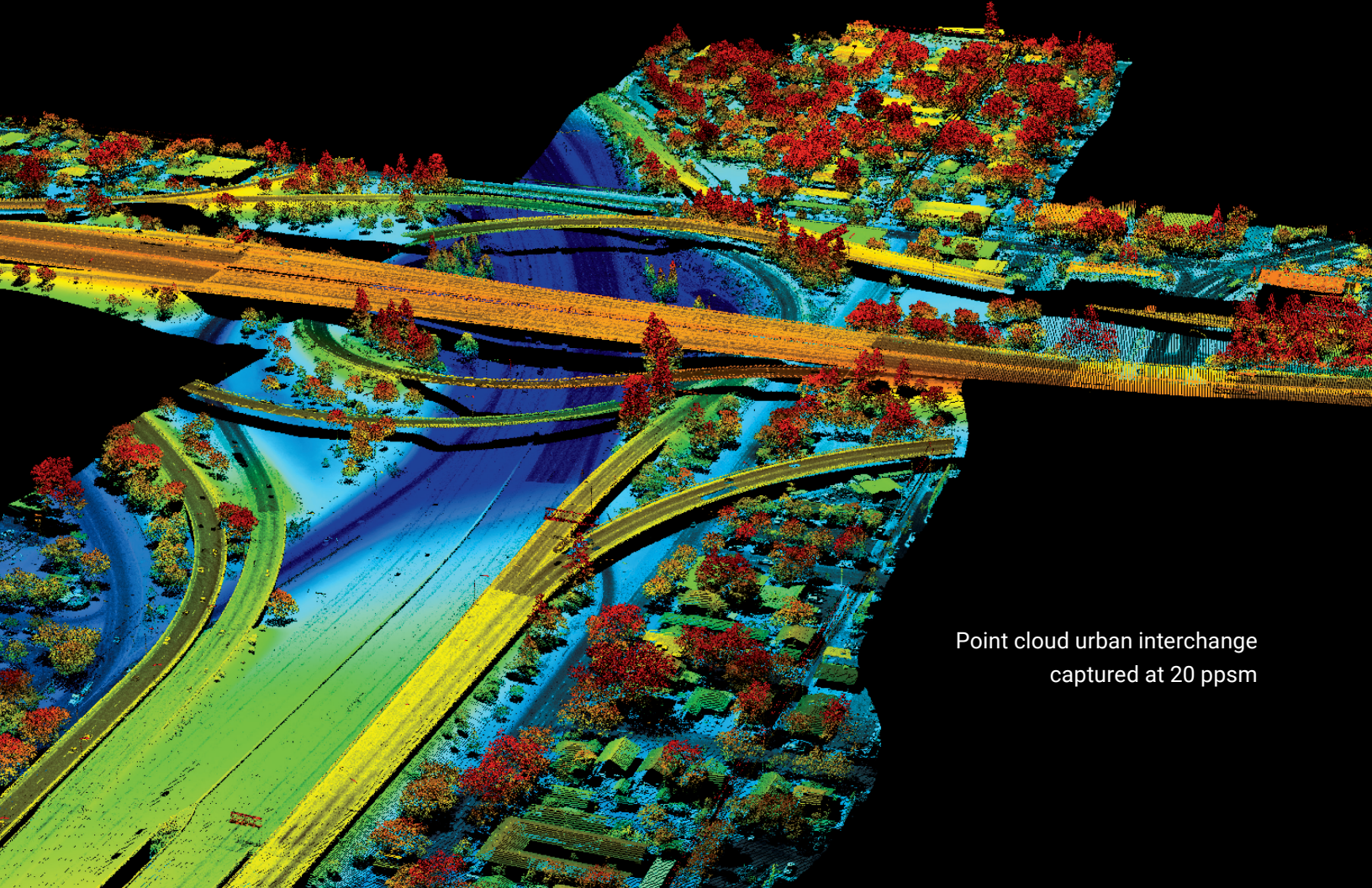
Analyze

If you don't demand excellence from your analysis, you're missing the point.

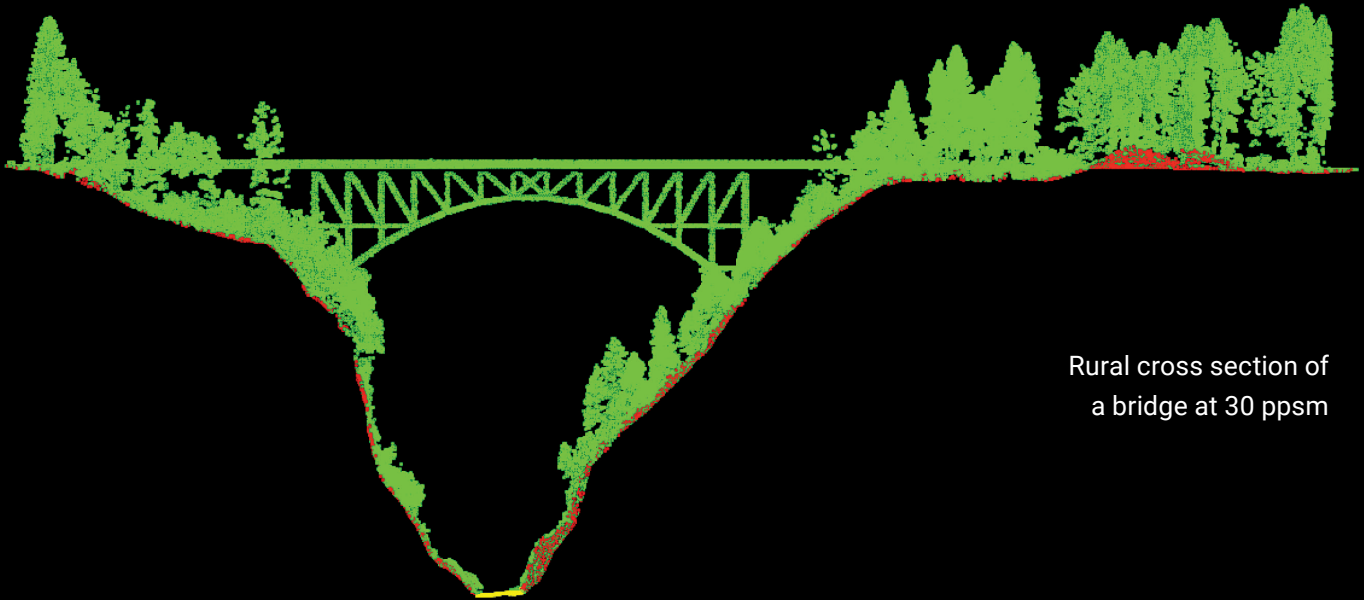
Our geospatial knowledge is unmatched. We have expertise in a wide range of disciplines and technology. We practice a solution-centered, scientific, and innovative approach to every challenge to get to the answer of our client's most challenging questions.







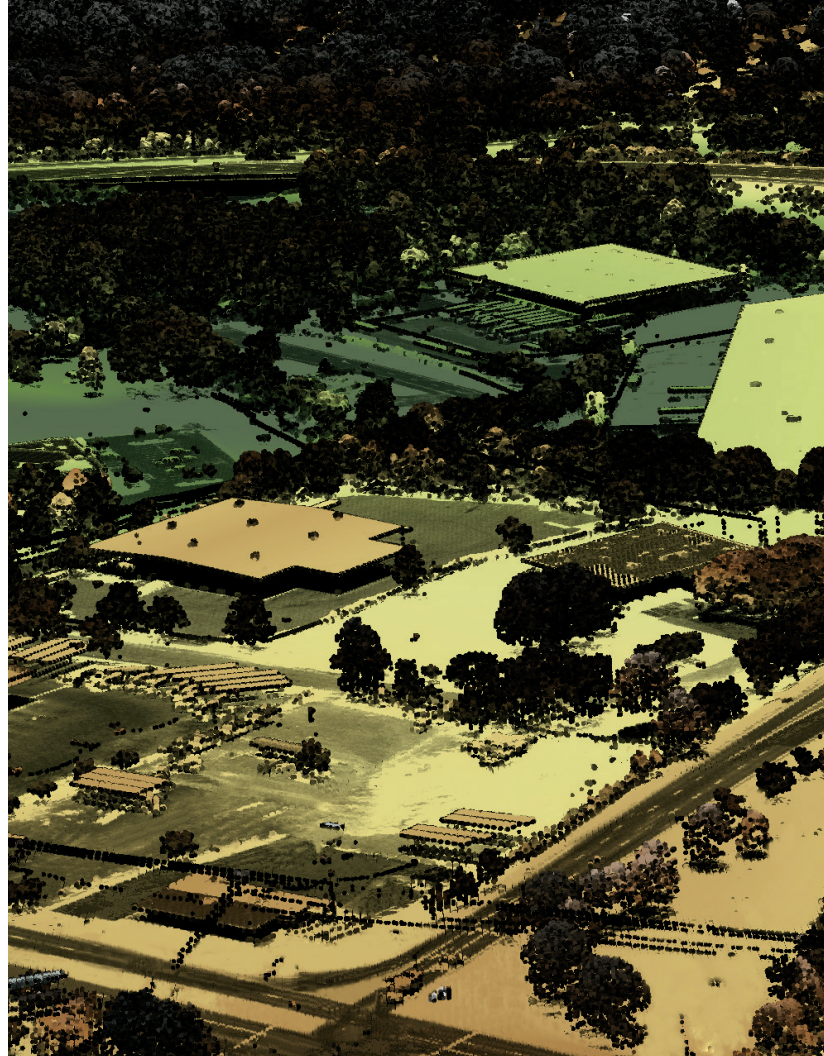
Point cloud urban interchange
captured at 20 ppsm

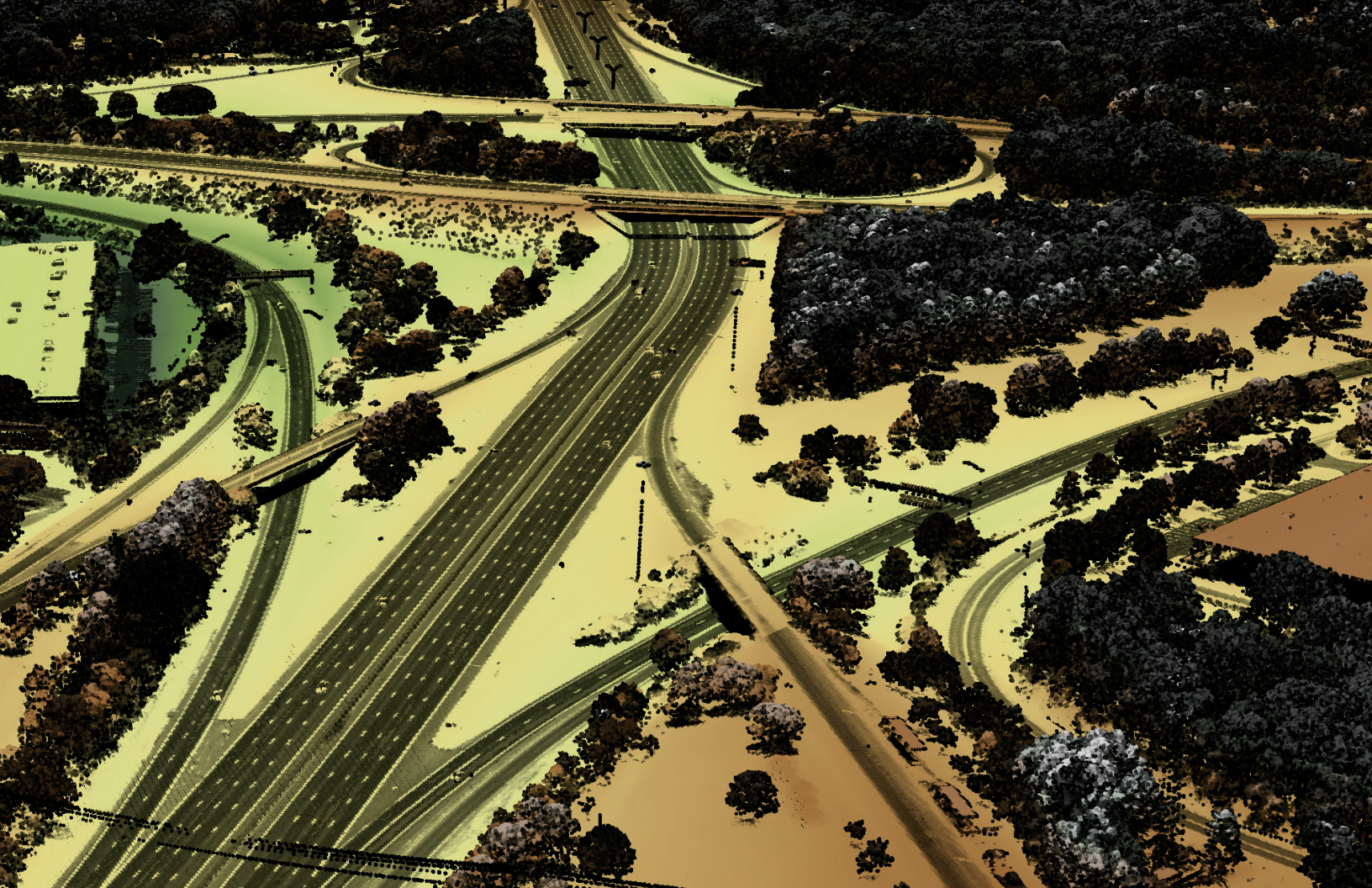


Rural cross section of
a bridge at 30 ppsm

Answer

NV5 provides solutions by deriving meaningful, actionable information to enhance the value of your data.





Tree ID T31042

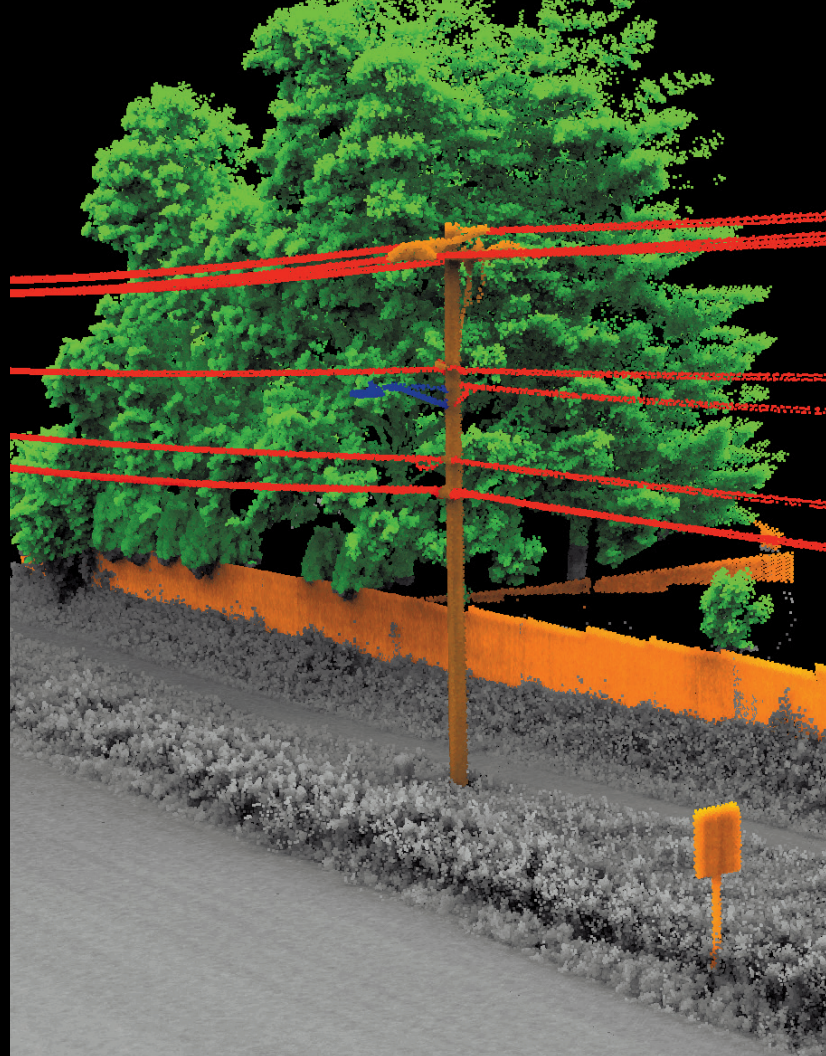
38.520459, -122.807122

77.41 ft

A 3D point cloud visualization of a tree. The tree's canopy is rendered in red, while the surrounding vegetation is green. A vertical white line with a blue base and top indicates the tree's height, which is labeled as 77.41 ft. A white line points from the text 'Tree ID T31042' and its coordinates to the top of the tree. The ground is a textured brownish-grey, and there are some white rectangular patches on the surface.

Innovative Answers

High-density, high-accuracy lidar point clouds provide an infinite number of opportunities for developing automated answers to your greatest challenges. Our dedicated innovation team has developed considerable capabilities that we use every day to provide important answers. Airport obstruction analysis (left) and pole loading calculations (right) are perfect examples of high-density lidar's application for enabling accurate and efficient answers to challenging questions.



Company Locations

Remote sensing & geospatial experts

● Anchorage

● Vancouver

● Portland

● Corvallis

● Los Angeles

● San Diego/
Carlsbad

● Denver/
Broomfield

● Sheboygan
● Sun Prairie
● Naperville

● Lexington
● St. Louis

● Birmingham

● Dulles
● Suffolk
● Newport

● St Petersburg

"Could not have asked for a better job put forth by the management team on this important task order. Job well done"

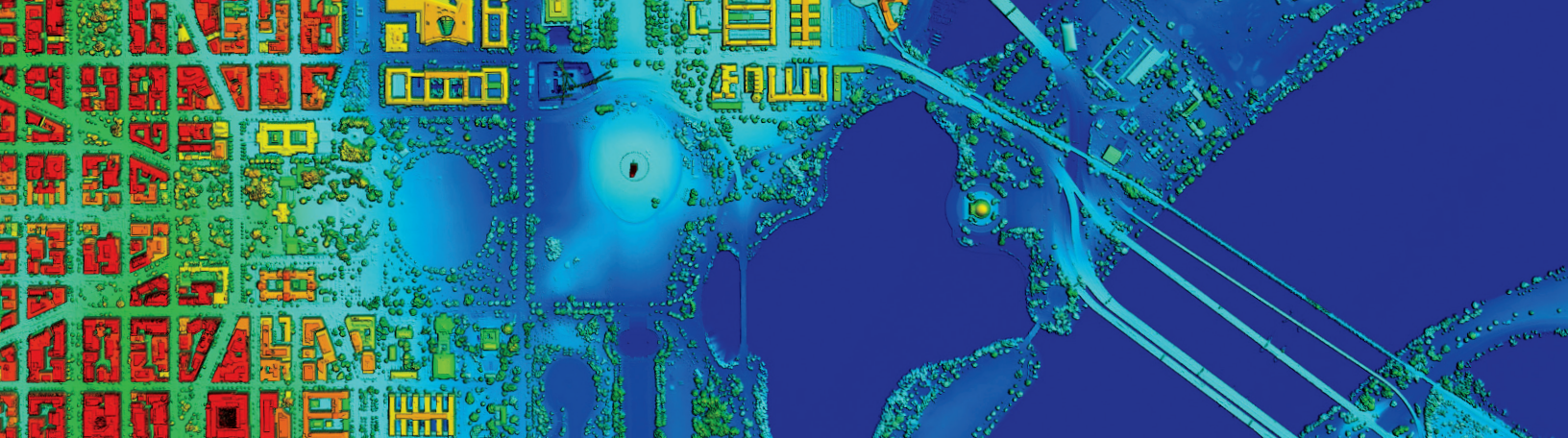
US Army Corps of Engineers

**We stand alone
among our peers
in analytical
capabilities**

**North America's most
comprehensive and capable
remote sensing firm**

"I was so impressed at how they truly understood what the goals of its client were and mapped a plan to meet those goals"

The Nature Conservancy



Contact Us

We would like to hear from you. Reach out to us with any questions about technology, challenges in optimizing the value, or deriving the most critical answers from the data.

My Contact

✉ nv5g-sales@nv5.com
🌐 www.NV5geospatial.com

Stay Connected

🐦 [@nv5geospatial](https://twitter.com/nv5geospatial)
📷 [@nv5geospatial](https://www.instagram.com/nv5geospatial)
🌐 www.linkedin.com/company/nv5-geospatial